

Air Operated Double Diaphragm Pump



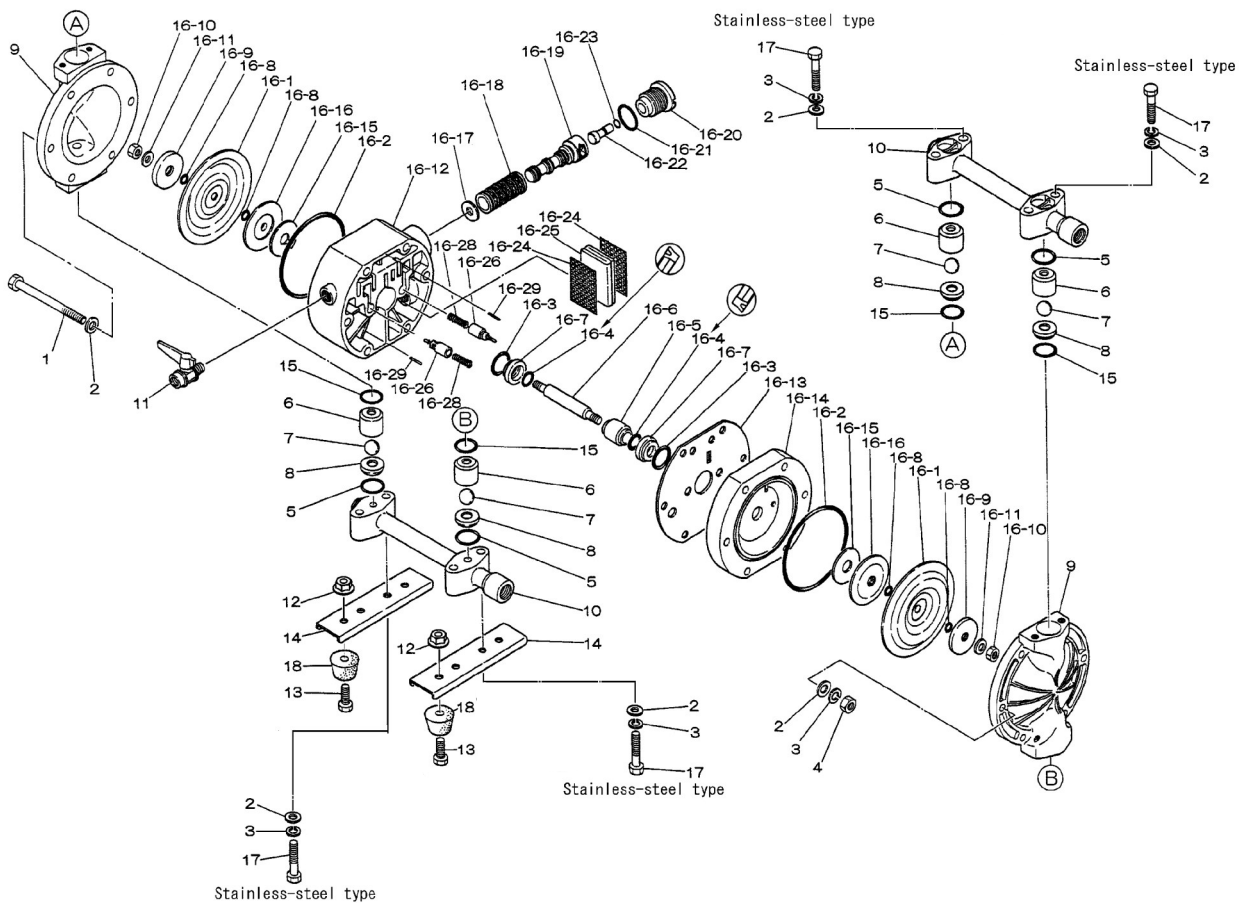
To Purchase:

- ☎ 800-990-7867
- ✉ sales@yamadapump.com
- 📍 Find My Rep

More Information:

- ▶ YouTube: @yamadapump
- 🌐 yamadapump.com
- Data Sheets | CAD Drawings | Manuals Literature | BOM | Performance Curves

Trial Program

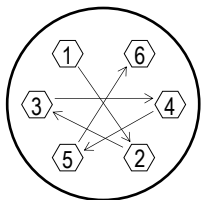


Air Operated Double Diaphragm Pump

	NDP-15BSC	NDP-15BSN	NDP-15BSH	NDP-15BSS	NDP-15BSV	NDP-15BST			
	851962	851963	851964	852686	n/s	851961			
REF. No.	PART No.	PART No.	PART No.	PART No.	PART No.	PART No.	DESCRIPTION	QTY.	REORDER
1	683224	683224	683224	683224	683224	683224	BOLT	6	
2	631329	631329	631329	631329	631329	631329	PLAIN WASHER	12	
3	681300	681300	681300	681300	681300	681300	SPRING LOCK WASHER	6	
4	687229	687229	687229	687229	687229	687229	NUT	6	
5	640025	640025	640025	684114	642025	643025	O-RING	4	
6	711502	711502	711502	711502	711502	711502	VALVE STOPPER	4	
7	771526	771525	773125	773169	771524-VT	771524	BALL	4	
8	711382	711382	711382	711382	711382	711382	VALVE SEAT	4	
9	711380	711380	711380	711380	711380	711380	OUT CHAMBER	2	
10	711506	711506	711506	711506	711506	711506	MANIFOLD	2	
11	686826	686826	686826	686826	686826	686826	BALL VALVE	1	
13	621102	621102	621102	621102	621102	621102	BOLT	4	
14	717185	717185	717185	717185	717185	717185	BASE	2	
15	640130	640130	640130	684113	642130	643130	O-RING	4	
16-1	770971	770973	771372	771972	770971-V	770933	DIAPHRAGM	2	
16-2	640144	640144	640144	640144	640144	640144	O-RING	2	
16-3	640020	640020	640020	640020	640020	640020	O-RING	2	
16-4	684284	684284	684284	684284	684284	684284	PACKING	2	
16-5	771337	771337	771337	771337	771337	771337	GUIDE	1	
16-6	710578	710578	710578	710578	710578	710578	CENTER ROD	1	
16-7	771336	771336	771336	771336	771336	771336	BUSHING	2	
16-8	640005	640005	-	-	642005	643005	O-RING	4	
16-9	708506	708506	708506	708506	708506	708506	CENTER DISK (OUTER)	2	
16-10	681849	681849	681849	681849	681849	681849	NUT	2	
16-11	684916	684916	684916	684916	684916	684916	CONED DISK SPRING	2	
16-12	780029	780029	780029	780029	780029	780029	BODY A	1	
16-13	771347	771347	771347	771347	771347	771347	GASKET	1	
16-14	780030	780030	780030	780030	780030	780030	BODY B	1	
16-15	771342	771342	771342	771342	771342	771342	CUSHION	2	
16-16	771344	771344	771344	771344	771344	771344	CENTER DISK (INNER)	2	
16-17	771483	771483	771483	771483	771483	771483	CUSHION	1	
16-18	804249	804249	804249	804249	804249	804249	SLEEVE ASSEMBLY	1	
16-18-*1	683123	683123	683123	683123	683123	683123	O-RING (SLEEVE O.D.)	6	
16-19	802835	802835	802835	802835	802835	802835	C-SPOOL VALVE ASSY.	1	
16-19 seal	771484	771484	771484	771484	771484	771484	SEAL RING	5	
16-20	771695	771695	771695	771695	771695	771695	CAP	1	
16-21	640022	640022	640022	640022	640022	640022	O-RING	1	
16-22	771350	771350	771350	771350	771350	771350	RESET BUTTON	1	
16-23	640002	640002	640002	640002	640002	640002	O-RING	1	
16-24	771589	771589	771589	771589	771589	771589	MESH	2	
16-25	771465	771465	771465	771465	771465	771465	SILENCER	1	
16-26	832141	832141	832141	832141	832141	832141	PILOT VALVE ASSY.	2	
16-28	710577	710577	710577	710577	710577	710577	SPRING	2	
16-29	632752	632752	632752	632752	632752	632752	SPRING PIN	2	
17	687235	687235	687235	687235	687235	687235	BOLT	8	
18	771123	771123	771123	771123	771123	771123	CUSHION	4	
19	631328	631328	631328	631328	631328	631328	PLAIN WASHER	4	
20	681855	681855	681855	681855	681855	681855	SPRING LOCK WASHER	4	
21	628010	628010	628010	628010	628010	628010	NUT	4	
KIT	K15-MC	K15-MN	K15-MH	K15-MS	K15-MV	K15-MT	Liquid Side Kit		
KIT	K15-AM						Air Motor Kit		

n/s - Non-Stock Pump

Air Operated Double Diaphragm Pump



Tightening torque:

Center Rod	122 in-lbf {14 N-m}
Out Chambers	105 in-lbf {12 N-m}
Manifold Retainer Bolts & Nuts	105 in-lbf {12 N-m}

General Tools:

- Socket wrench - 13mm
- Open-end wrenches - 13mm, 21mm
- Pliers

Special Tools (sold separately):

- Sleeve remover (713148)

Miscellaneous:

- Assembly Oil - turbine oil class 1 (equivalent to ISO VG32 grade)
- Nuts - M8 x 1.25
- Urea grease grade (NLGI) No. 2